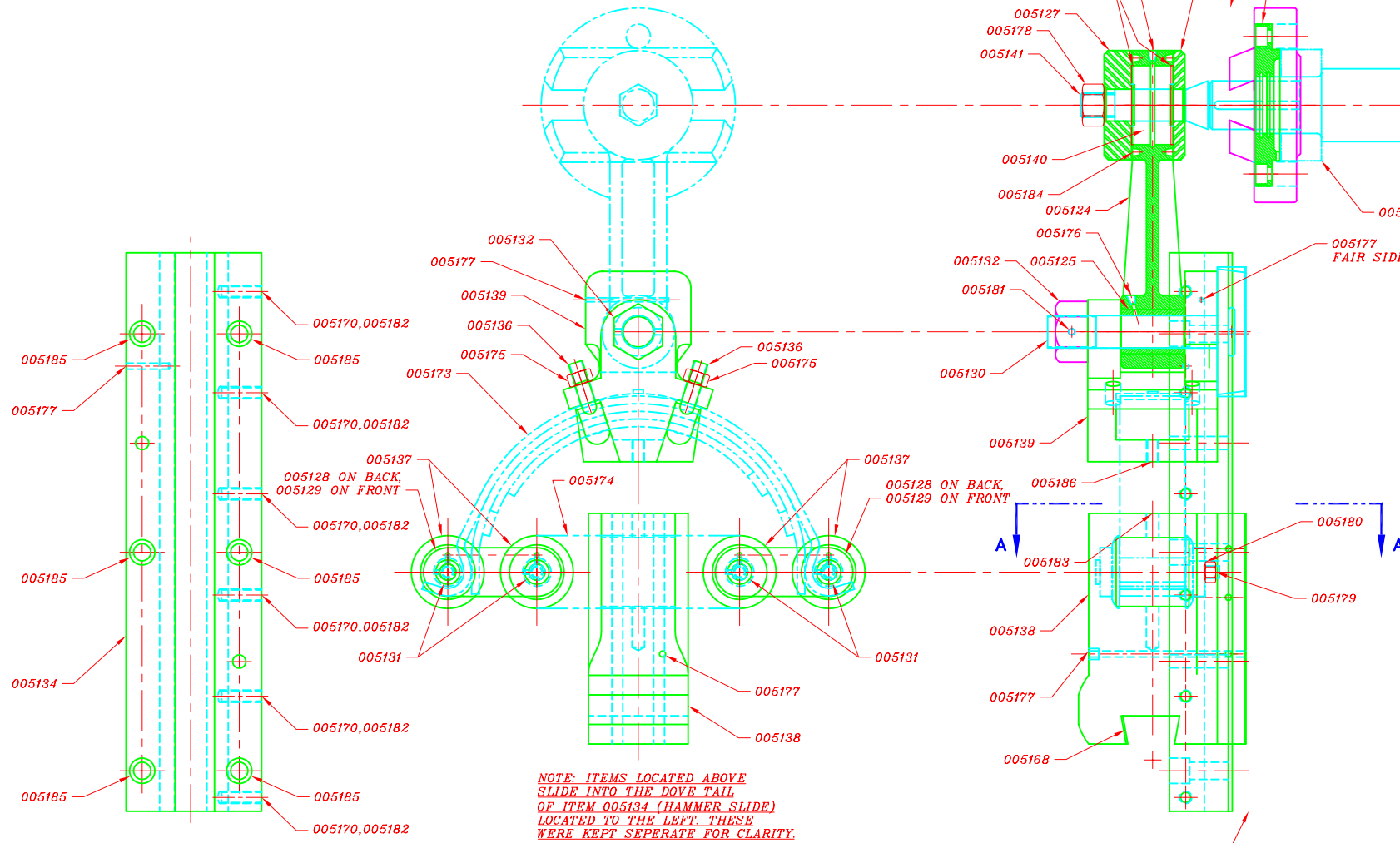
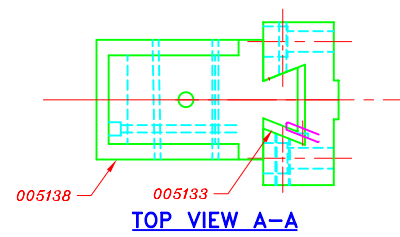
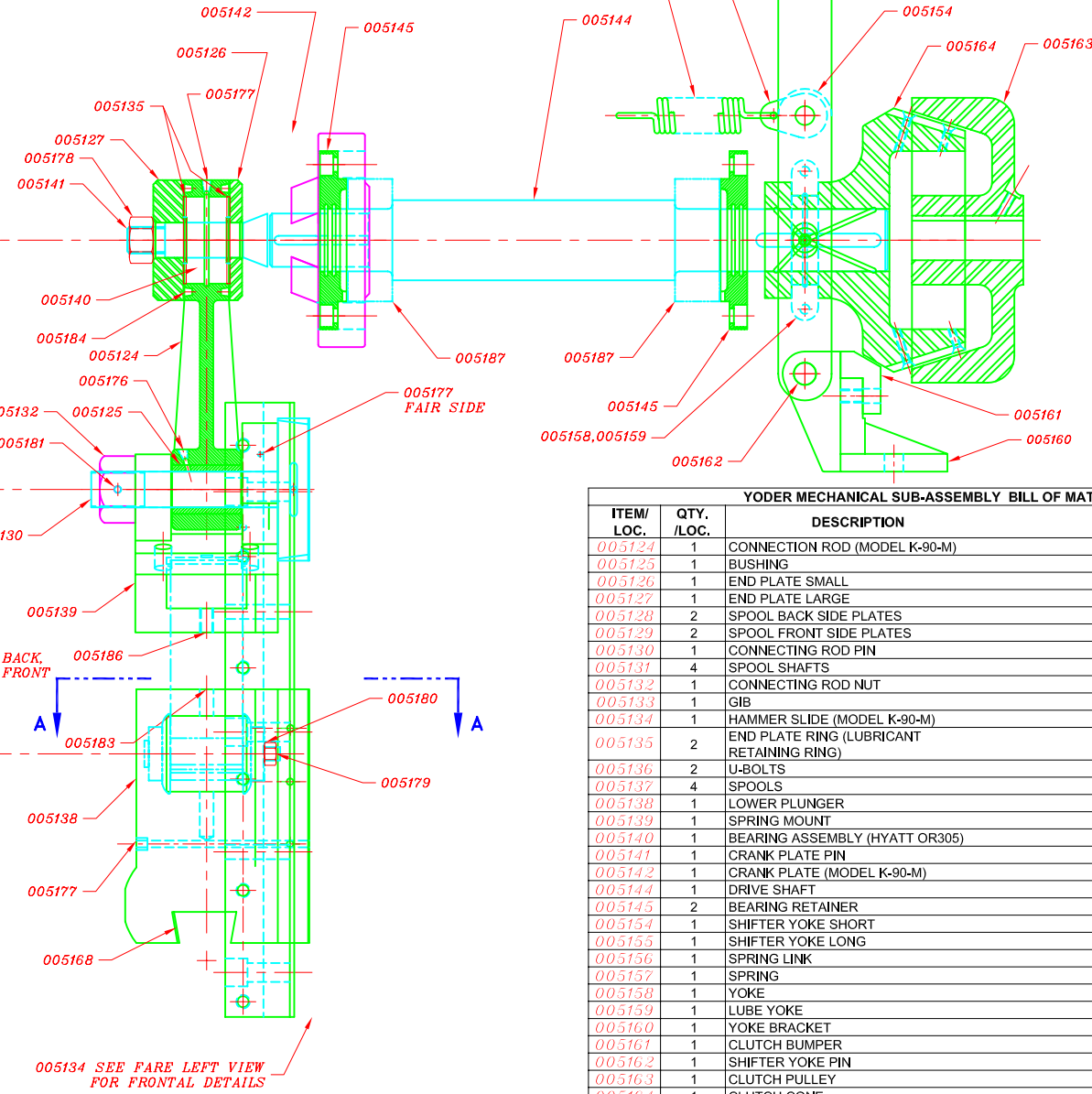


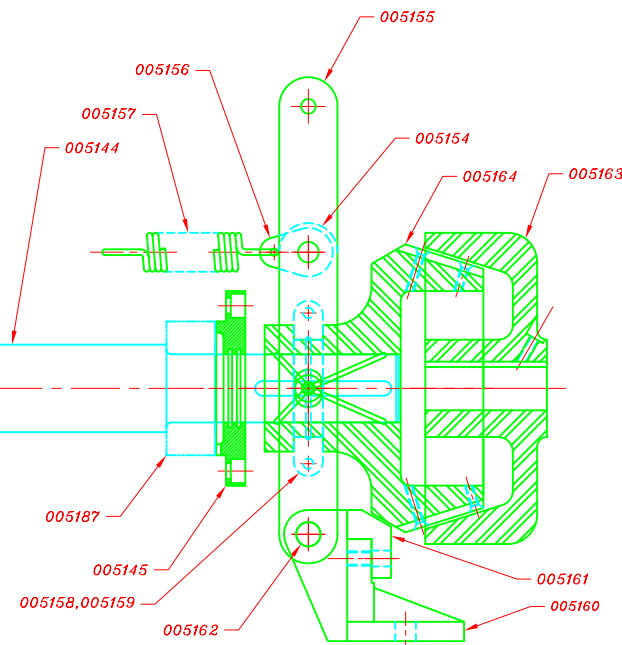
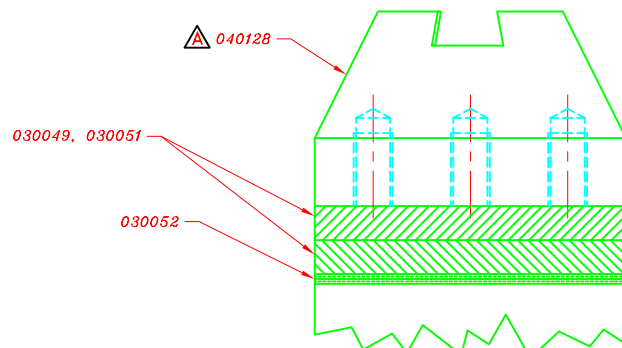
NOTE: FOR SIMPLICITY OF DRAWING CONSTRUCTION, EXTERNAL REFERENCES AND BLOCKS WERE USED. FOR THIS REASON, SOME ITEMS ON THIS DRAWING OVERLAP EACH OTHER AND DO NOT SHOW PROPER LINE DEPICTION.



NOTE: ITEMS LOCATED ABOVE SLIDE INTO THE DOVE TAIL OF ITEM 005134 (HAMMER SLIDE) LOCATED TO THE LEFT. THESE WERE KEPT SEPERATE FOR CLARITY.



005134 SEE FARE LEFT VIEW FOR FRONTAL DETAILS



YODER MECHANICAL SUB-ASSEMBLY BILL OF MATERIAL		
ITEM/LOC.	QTY./LOC.	DESCRIPTION
005124	1	CONNECTION ROD (MODEL K-90-M)
005125	1	BUSHING
005126	1	END PLATE SMALL
005127	1	END PLATE LARGE
005128	2	SPOOL BACK SIDE PLATES
005129	2	SPOOL FRONT SIDE PLATES
005130	1	CONNECTING ROD PIN
005131	4	SPOOL SHAFTS
005132	1	CONNECTING ROD NUT
005133	1	GIB
005134	1	HAMMER SLIDE (MODEL K-90-M)
005135	2	END PLATE RING (LUBRICANT RETAINING RING)
005136	2	U-BOLTS
005137	4	SPOOLS
005138	1	LOWER PLUNGER
005139	1	SPRING MOUNT
005140	1	BEARING ASSEMBLY (HYATT OR305)
005141	1	CRANK PLATE PIN
005142	1	CRANK PLATE (MODEL K-90-M)
005144	1	DRIVE SHAFT
005145	2	BEARING RETAINER
005154	1	SHIFTER YOKE SHORT
005155	1	SHIFTER YOKE LONG
005156	1	SPRING LINK
005157	1	SPRING
005158	1	YOKE
005159	1	LUBE YOKE
005160	1	YOKE BRACKET
005161	1	CLUTCH BUMPER
005162	1	SHIFTER YOKE PIN
005163	1	CLUTCH PULLEY
005164	1	CLUTCH CONE
005168	2	DIE BLOCK KEY
005170	6	GIB SET SCREWS 3/8-16 X 2"
005173	1 EA.	SPRING SUB-ASSEMBLY
005174	N/A	BELTING
005175	4	U-BOLT NUTS 7/16-20 (FOR FABRICATED U-BOLT)
005176	1	GREASE FITTING 1/8 NPT 1-1/4 HT.
005177	4	GREASE FITTINGS 1/8 NPT STRAIGHT
005178	1	CRANK PLATE PIN NUT 3/4-10 THREAD
005179	4	3/8-16 NUTS (FOR SPOOL SHAFTS)
005180	4	3/8-16 INTERNAL TOOTH LOCK WASHERS (FOR SPOOL SHAFTS)
005181	1	3/16 X 1-3/4 (CONNECTING COTTER PIN)
005182	6	GIB JAM NUTS 3/8-16 THREAD
005183	1	BELTING SCREW 3/8 X 4"(WOOD SCREW, LAG SCREWS)
005184	2	FELT LINERS (GRAY FELT STRIPS)
005185	6	HAMMER SLIDE BOLTS 1/2-13
005186	1	SPRING SET SCREW 3/8-16 X 2"
005187	2	TIMKEN BEARINGS ASSEMBLIES (TIMKEN # 3525 RACE & 355 BEARING)
030049	1+	YODER DIE BLOCK, LOWER DIE BLOCK SHIMS (ALUMINUM)
030050	4	YODER DIE BLOCK, LOWER DIE BLOCK BOLTS (1-8 THREAD X ? LONG)
030051	1+	YODER DIE BLOCK, LOWER DIE BLOCK SHIMS (WOOD)
030052	1+	YODER DIE BLOCK, LOWER DIE BLOCK SHIMS (CANVAS)
040128	1	LOWER DIE BLOCK